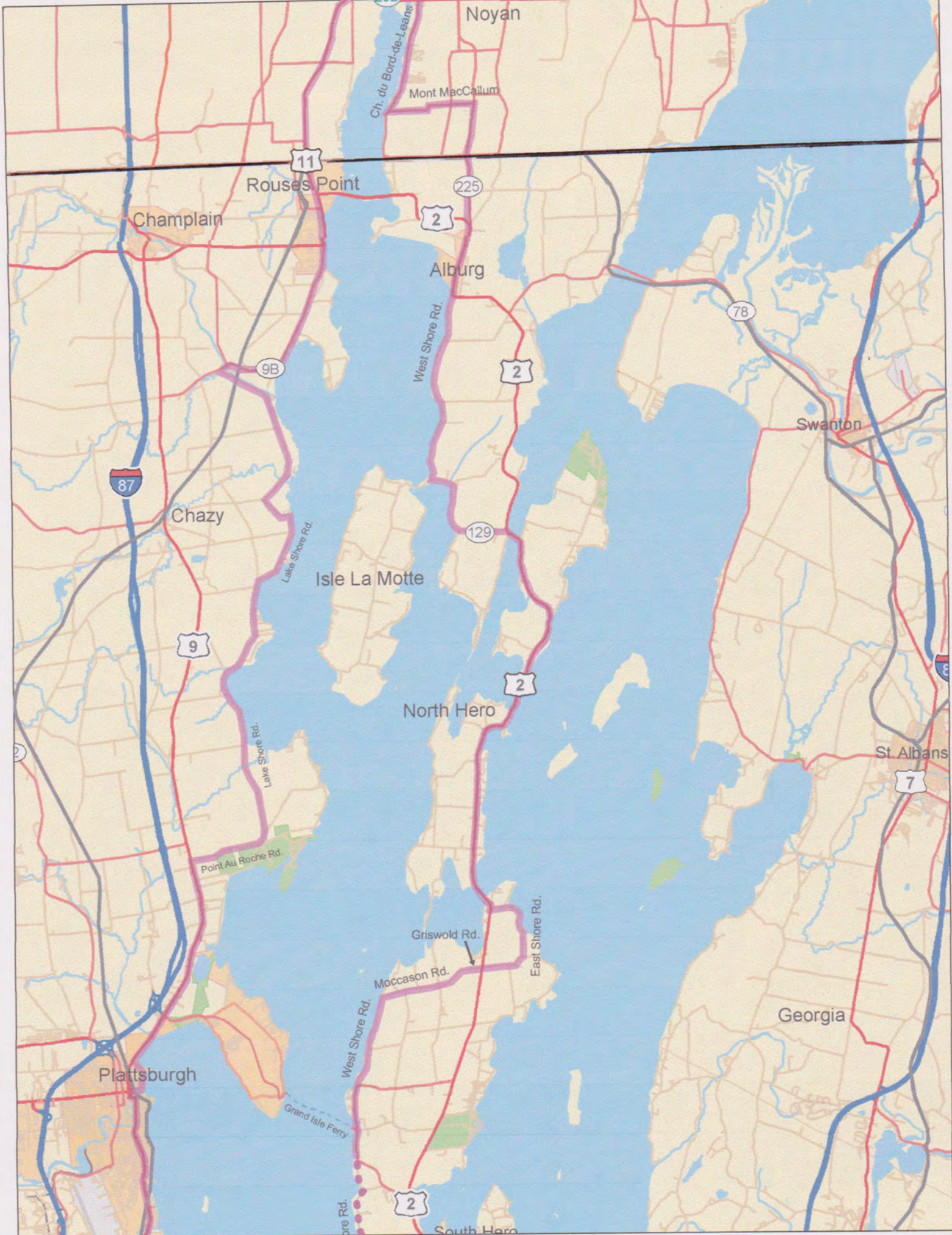


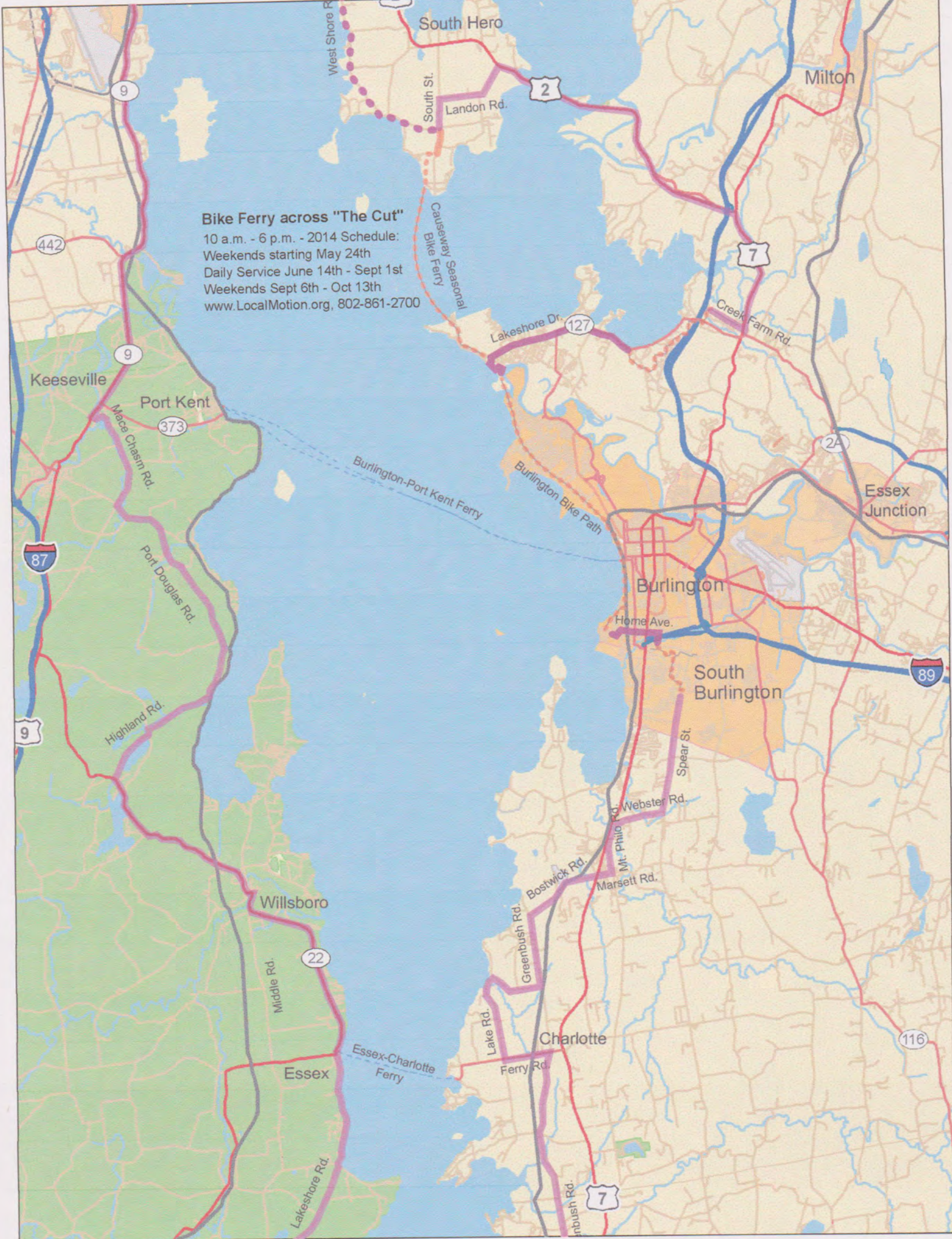
Interstate	US Hwy.	State Hwy.	N
Freeway	Stream/waterbody		
US or State Hwy.	County Line		
Secondary Road	State Line		
Main Bicycle Route	Bicycle Path		
Alternate Route	Bicycle Theme Loop		
Unpaved Bicycle Route	Municipality		
Railroad	Public Lands		

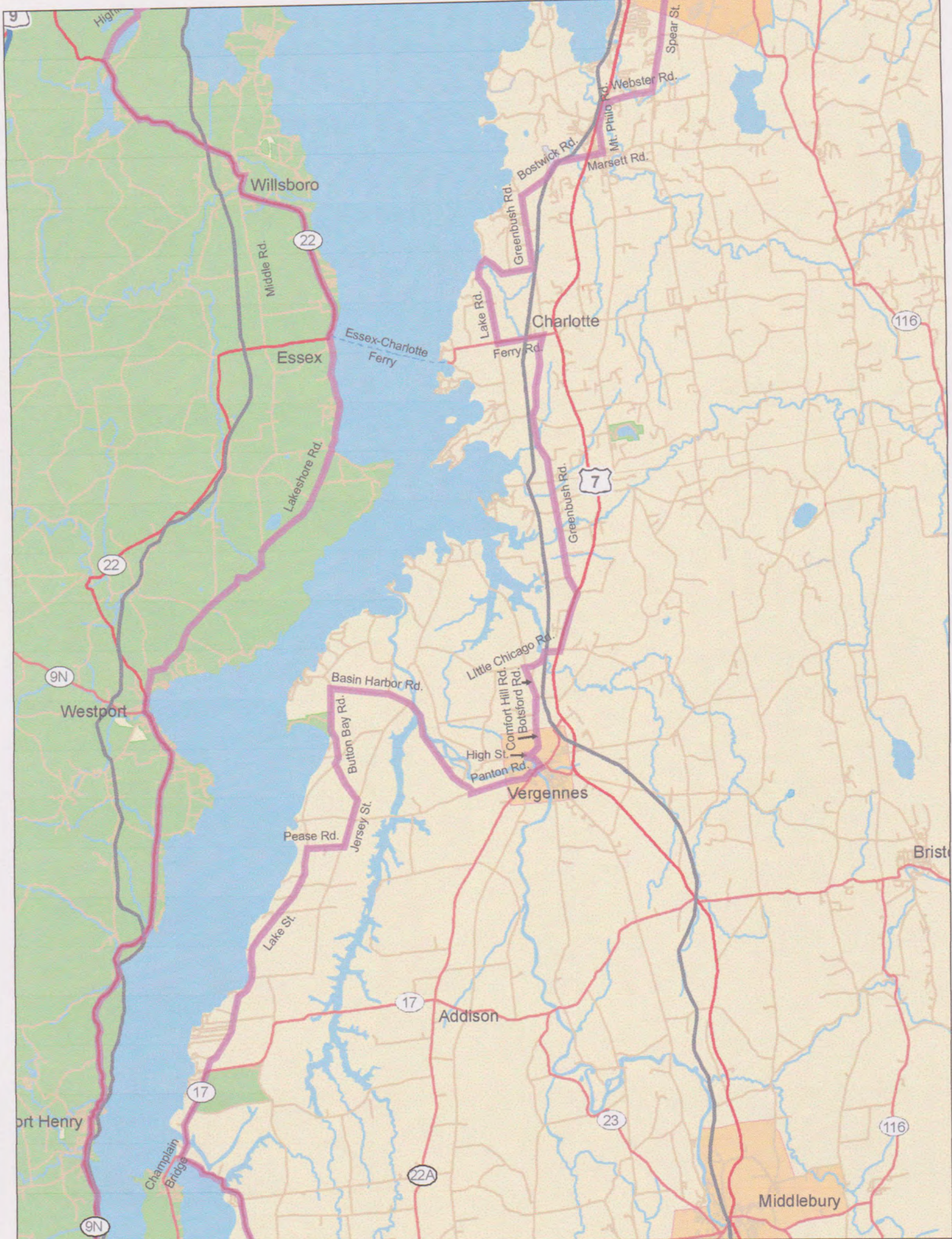
The printing of this map made possible through a generous donation from the Tiller Family Foundation.



Bike Ferry across "The Cut"

10 a.m. - 6 p.m. - 2014 Schedule:
Weekends starting May 24th
Daily Service June 14th - Sept 1st
Weekends Sept 6th - Oct 13th
www.LocalMotion.org, 802-861-2700





Willsboro

Middle Rd.

22

Essex

Essex-Charlotte Ferry

Lakeshore Rd.

22

9N

Westport

Basin Harbor Rd.

Button Bay Rd.

Pease Rd.

Jersey St.

Lake St.

17

Addison

Little Chicago Rd.

Comfort Hill Rd.

Botisford Rd.

High St.

Pantan Rd.

Vergennes

Charlotte

Lake Rd.

Ferry Rd.

Greenbush Rd.

Bostwick Rd.

Marssett Rd.

Webster Rd.

Spear St.

7

Greenbush Rd.

116

Brist

Port Henry

Champlain Bridge

17

23

22A

Middlebury

116

9N

Lake Champlain Bikeways

The Champlain Bikeway

Vermont, New York, Québec



A 1600 mile bicycle route network in the Champlain region of Vermont, New York and Québec

Lake Champlain Bikeways
1 Steele St. #103, Burlington, VT 05401
www.champlainbikeways.org

The Champlain Bikeway

Directions along West Side - North to South

- 0.0 Fort Chambly
- 0.3 ← Into paved parking
- 0.5 ← On bike path
- 3.9 ↑ Enter PROPRIETE PRIVEE
- 4.2 Exit PROPRIETE PRIVEE at intersection
- 5.2 ↑ Bridge - access to Rt. 223
- 8.0 ↑ On gravel path
- 12.2 Exit bike path on SW corner of Pont Gouin
- 12.3 ← South on Rue Place du Quai
- 12.5 → On Rue Place du Quai
- 12.9 ↑ On Rue Jacques Cartier
- 15.6 ↑ On Rt. 223
- 16.8 → On Montee de la Cannerie
- 18.5 ↑ On Ch. Grand Bemier
- 20.3 ← On Rue Principale
- 21.2 → On Rue de l'Eglise
- 23.3 ↑ On Ch de la 2E Ligne
- 23.5 → On Mtee Blais
- 25.1 ↑ On Rg. St. Joseph
- 26.0 ↑ On Mont du Petit Range which becomes Mont Guay
- 28.3 → On Ch de la 4E Ligne - SAINT VALENTIN
- 28.4 ← On Rang St. Georges
- 30.5 ← On 35 E
- 31.1 ↑ On Rt. 223
- 38.3 ↑ US Customs
- 40.3 ↑ On Rt. 9B - ROUSES POINT
- 44.8 ← On Lakeshore Rd.
- 58.1 → On Point Au Roche Rd. at park
- 59.8 ↑ On Rt. 9
- 63.6 ↑ Pass Rt. 314 - ferry is 4 miles to the left
- 65.0 ↑ On Cumberland Ave. at Georgia Pacific Plant
- 66.0 ↑ On City Hall Place after bridge
- 66.1 ← On Bridge St.
- 66.6 → On Jay St.
- 66.7 → Enter bike path
- 68.2 → Exit bike path and go up hill
- 68.3 ← On Rt. 9
- 76.5 ↑ Bridge over Ausable River
- 78.8 ↑ On Rt. 373 at top of second hill
- 79.1 ↑ On Mace Chasm Rd. across from campground entrance
- 81.8 ← On Port Douglas Rd.
- 83.0 → On Highlands Rd.
- 89.6 ↑ Pavement ends - surface is good
- 90.9 ← On Rt. 22
- 94.8 ← Cross bridge following Rt. 22 - WILLSBORO
- 95.3 ← Middle Rd. intersection - Rt. 22 to Essex

Directions along East Side - North to South

- 0.0 Fort Chambly - proceed north toward town
- 0.3 ← Into paved parking
- 0.5 ← On bike path
- 3.9 ↑ Enter PROPRIETE PRIVEE
- 4.2 → Exit PROPRIETE PRIVEE at intersection
- 5.2 ↑ Bridge - access to Rt. 223
- 8.0 ↑ On gravel path
- 12.2 Exit bike path on SW corner of Pont Gouin
- 12.2 Cross Pont Gouin on south side of bridge
- 12.5 → On first street after bridge
- 12.6 → On 2nd Ave.
- 12.7 ← On Bellerive
- 15.1 ↑ Cross foot bridge in park
- 15.1 ↑ On Rue Petit
- 15.5 ← On Rue Joseph-Albert-Morin
- 15.9 → On Rt 133 - CAUTION - HEAVY TRAFFIC
- 16.4 ← On Mtee Bertrand
- 17.5 → On Rg Grand Sabrevois
- 20.7 → On Mtee Meunier
- 21.8 ← On Rt. 133
- 22.1 → On Rt. 225 - SABREVOIS
- 33.9 → On Ch du Bord-de-l'Eau N
- 36.0 ↑ Cross Rt. 202 onto Ch du Bord-de-l'Eau S
- 39.7 ← On Mont MacCallum - DO NOT GO STRAIGHT AND CROSS BORDER ILLEGALLY
- 41.7 → On Rt. 225 - Ch de la 3e Concession
- 42.8 ↑ US Customs on Border Rd.
- 44.2 → On Rt. 2 - ALBURGH
- 46.0 → On West Shore Rd.
- 50.4 ← On Rt. 129
- 53.2 → On Rt. 2
- 58.2 ↑ North Hero - continue on Rt. 2
- 62.3 → Cross drawbridge
- 62.5 ← Onto East Shore Rd.
- 62.5 → Onto Faywood Rd.
- 65.3 ↑ Cross Rt. 7 onto Griswold Rd., becomes Moccasin Rd.
- 67.8 ← On West Shore Rd.
- 70.1 ↑ On Rt. 314
- 70.9 ↑ Pass Grand Isle to Plattsburgh Ferry Dock
- 71.7 ↑ On West Shore Rd. which becomes unpaved
- 77.3 ← On South St. - Right to bike ferry to Colchester
- 78.0 → On Landon Rd.
- 79.7 → On Rt. 2
- 81.7 ↑ Pass Sand Bar State Park
- 86.6 ↑ On Rts. 2 and 7
- 89.5 → On Creek Farm Rd.

- 90.9 ← On Rt. 22
- 94.8 ← Cross bridge following Rt. 22 - WILLSBORO
- 95.3 ← Middle Rd. Intersection - Rt. 22 to Essex
- 99.7 ↑ Ferry to Charlotte, VT - ESSEX
- 110.1 ← On Rt. 22
- 110.6 ↑ Westport Green
- 121.0 ↑ PORT HENRY
- 124.7 ← On Rt. 185.
- 125.7 → On Trimble Rd.
- 126.6 ← Cross RR and left on Lake Rd.
- 128.8 ← On Rt. 22
- 129.4 ← CROWN POINT
- 133.5 ← On Shore Airport Dr.
- 137.7 ← On Rt. 22
- 138.2 ↑ Ft. Ticonderoga is 1.4 miles to the left
- 140.9 ← On Wrights Ferry Rd.
- 144.8 ↑ On Lower Rd.
- 147.3 ← On Rt. 22 - PUTNAM CENTER
- 163.4 ← On Clinton Ave.
- 163.6 → At Lock 12 - WHITEHALL
- 163.8 ↑ Pass bridge on left
- 164.2 ↑ Skeensboro Museum

Safety Guidelines

Motorists and bicyclists share scenic roads. Use caution on narrow, winding or unpaved roadway. Follow traffic laws and ride safely. Bicycles are vehicles by law and have the right to use public roads. You are responsible for operating your bicycle under all conditions.

When cycling, please follow these guidelines

1. WEAR A HELMET and cycling gloves.
2. Ride with the flow of traffic.
3. When using travel lanes, follow motor vehicle laws.
Obey all traffic signs and signals. Do not cut corners.
4. Use clear hand signals when making turns or stopping.
5. Ride in a straight line at least 3 feet from parked cars or curbs.
6. If you must ride at night, use lights and reflectors.
7. Ride defensively! Be aware of motorists' actions.
8. Be aware of train tracks and other road conditions.
9. Ride single file.
10. Carry items in panniers or a handle-bar pack.

Lake Champlain Bikeways Mission

To promote bicycling throughout the Lake Champlain regions of New York, Vermont and Québec for the purposes of increasing opportunities for bicycle recreation and transportation, improving the quality of life, enhancing the economic vitality, advocating for sustainable communities, encouraging healthy lifestyles and raising public awareness and appreciation of inherent scenic, historic, cultural, natural, and recreational resources throughout the area.

Lake Champlain Bikeways Clearinghouse

Contact us to order a variety of LCB publications, as well as other regional bicycling information:

Lake Champlain Bikeways, c/o Local Motion Trailside Center
 One Steele Street #103
 Burlington, VT 05401
 802.652.BIKE (2453)
 info@champlainbikeways.org, www.champlainbikeways.org

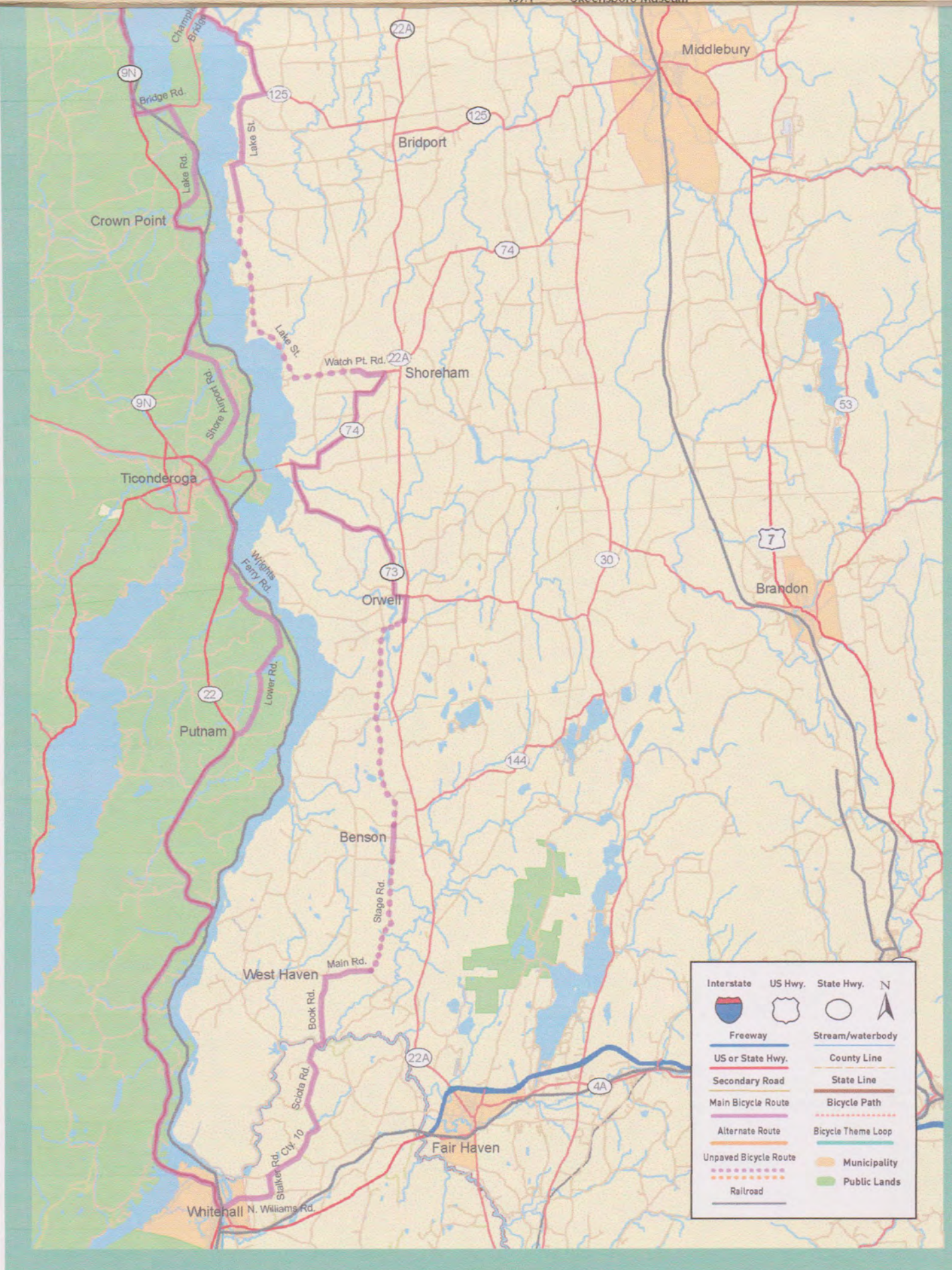
Disclaimer

Users assume all risks, inherent and not inherent, in the use of materials recommending routes of the Lake Champlain Bikeways network and all affiliated organizations, and individuals disclaim any and all liability on their part for damages or injuries to persons or property should they occur. Routes are chosen, designated and/or signed because: they are popular, or are preferred, or provide

- 81.7 ↑ Pass Sand Bar State Park
- 86.6 → On Rts. 2 and 7
- 89.5 → On Creek Farm Rd.
- 90.4 ← On LeClaire Dr.
- 90.6 → On Bike Path crossing bridge from Hollow Creek Dr.
- 90.7 ↑ Cross Rt 127 and stay on bike path
- 90.9 ← On Bike path
- 91.0 ← On Bayview Rd.
- 91.2 → On Jason Dr.
- 91.5 ← On Williams Rd.
- 91.6 → On Julie Dr. and follow bike path
- 92.1 ← Cross Blakely Rd. (Rt. 127) and stay on bike path at school.
- 92.7 ← Leave park onto West Lakeshore Dr.
- 94.6 → Onto bike path at Holy Cross Rd.
- 95.6 ↑ Cross intersection and continue on bike path beside Airport Rd.
- 96.2 ← On Buckingham Dr. - Rest rooms on left in park
- 96.5 ← On Biscayne Heights
- 96.6 → Onto Windemere Way
- 96.6 ↑ On bike path
- 97.2 ↑ Bridge over Winooski River
- 102.1 ↑ Ferry Dock and Local Motion
- 103.9 ↑ Through Oakledge Park onto Burlington Bike Path
- 104.1 ← On Austin Dr. which becomes Home Ave.
- 105.1 ↑ Cross Rt. 7 (Shelburne Rd.) onto Farrell St.
- 105.3 → On Farrell St. at Stop sign
- 105.7 ← On Swift St. and right onto bike path
- 105.8 ← On bike path at playground
- 106.4 ← On bike path to Szymanski Park
- 106.6 → On public road in condo development
- 106.7 → On bike path
- 106.7 ← On bike path
- 106.9 ← On Bike Path at tennis court
- 107.4 ← On Deerfield Dr. to Overlook Park
- 107.5 → On Spear St. - Park is on the left
- 110.3 → On Webster Rd.
- 111.4 → To get to traffic light for left turn on Rt. 7
- 111.7 ← On Rt. 7 - SHELBURNE
- 112.7 ← On Mt Philo Rd. at traffic light passing Shelburne Store
- 113.2 → Onto Marsett Rd.
- 113.5 ↑ Cross Rt. 7 onto Bostwick Rd.
- 115.4 ← On Greenbush Rd.
- 117.0 → On Lake Rd.
- 121.3 ← On Ferry Rd.
- 126.8 → On Greenbush Rd. at Old Brick Store in CHARLOTTE
- 128.3 → On Rt. 7
- 129.1 → On Little Chicago Rd.
- 131.3 ← On Botsford Rd. which becomes Comfort Hill Rd.
- 131.5 → On High St.
- 132.0 ← On Macdonough St.
- 132.1 → On Rt 22A - VERGENNES
- 132.2 → On Canal St.
- 132.2 ← Onto West St.
- 132.6 → On Pantou Rd.
- 133.8 → On Basin Harbor Rd.
- 138.3 ← On Button Bay Rd.
- 141.0 ← On Button Bay Rd.
- 141.5 ↑ At Store on Jersey St. - PANTON
- 142.0 → On Pease Rd.
- 143.0 ← On Lake St.
- 148.8 → On Rt. 17 at WAGS - store
- 150.9 ← Intersection of Rts. 17 and 125 - Cross bridge to Crown Point Historic Site
- 154.0 → On Lake St.
- 158.0 ↑ On Lake St. -unpaved at Crown Point Rd.
- 160.2 ↑ On Lake Rd. - unpaved at Lapham Rd.
- 163.1 ← On Watch Point Rd. - unpaved
- 164.3 ↑ Watch Point Rd.- Basin Harbor Rd. intersection
- 165.5 → On Rt. 74 - SHOREHAM
- 169.7 ← On Rt. 73
- 175.5 → On Rt. 22A
- 176.2 → On Cook Rd.
- 176.8 ← On Stage Rd.
- 182.8 ↑ BENSON
- 186.7 → On Main Rd.
- 187.9 ← On Book Rd. - WEST HAVEN
- 190.0 ↑ Cross Poultney River on CR 10 - State Line
- 194.6 ← On Stalker Rd.
- 195.2 → On CR 9.

or signed because: they are popular, or are preferred, or provide continuous routes to destinations, or are lightly traveled, or are scenic, or have more room for cars and bikes, or possess a combination of these attributes.

- 195.2 → On CR 9.
- 196.1 → On N. Williams St.
- 196.5 → Cross bridge at Lock 12 - WHITEHALL
- 196.6 → On N. Main St.
- 197.1 Skeensboro Museum



Interstate	US Hwy.	State Hwy.	N
Freeway	Stream/waterbody	County Line	
US or State Hwy.	State Line	Bicycle Path	
Secondary Road	Bicycle Theme Loop		
Main Bicycle Route			
Alternate Route			
Unpaved Bicycle Route	Municipality		
Railroad	Public Lands		